

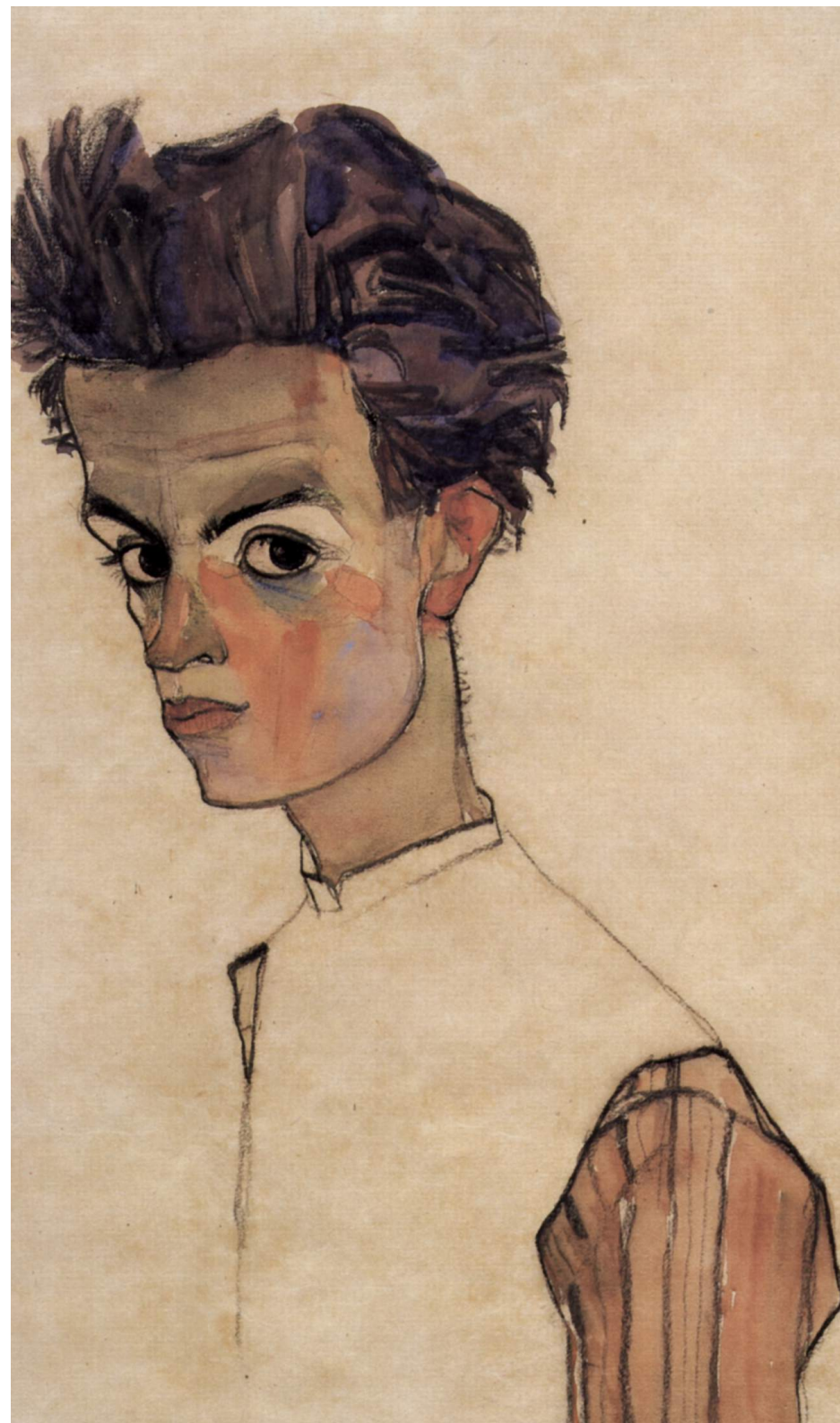
# EGON SCHIELE

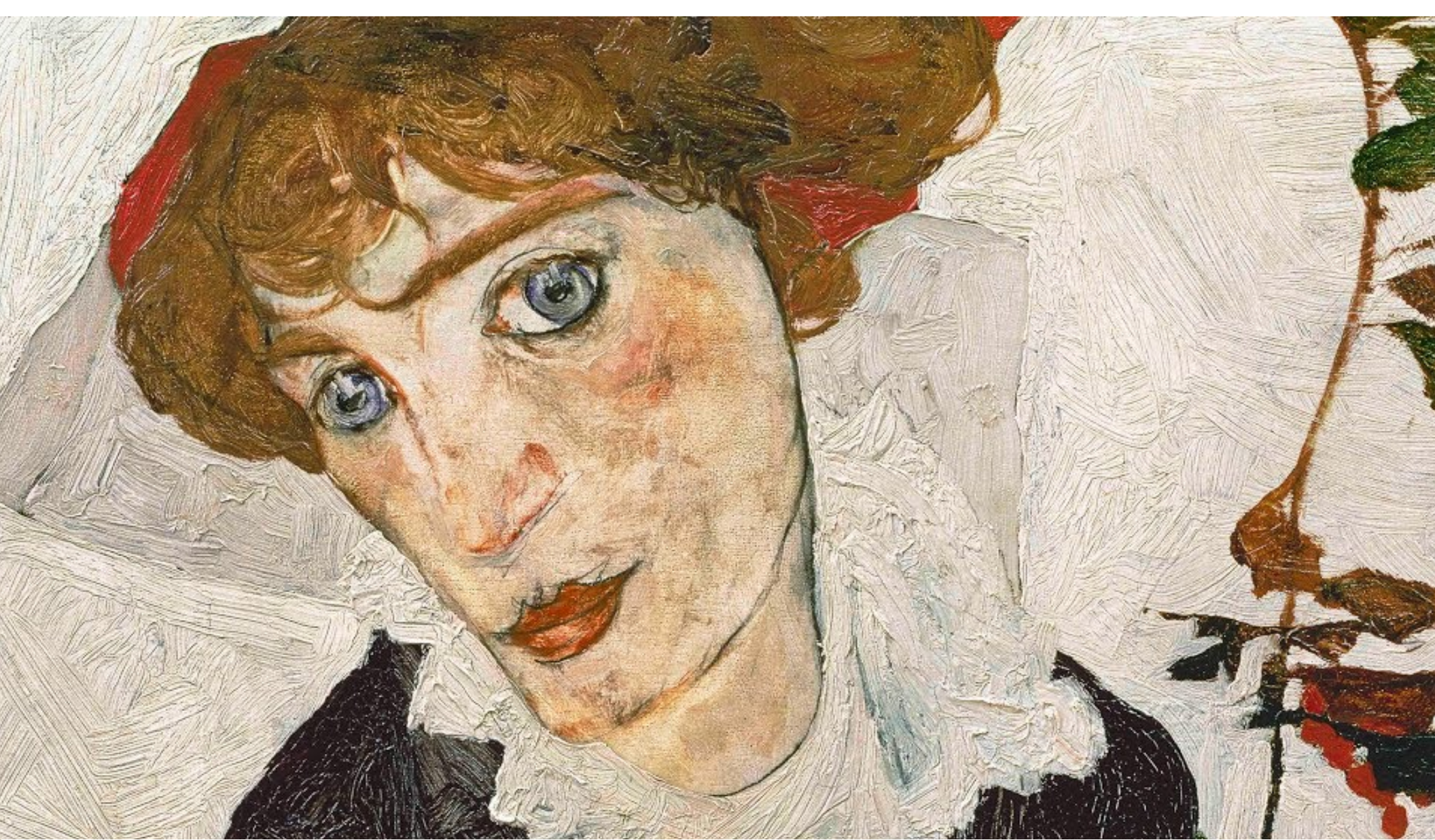
---

*«Portrait of Wally»*

# EGON SCHIELE

Egon Schiele was an Austrian painter born on June 12, 1890. As an artist he was active primarily during the early 20th century and, therefore, he was an expressionist. His works have a very distinguished, specific style. His art is provocative, somewhat dark and gloomy, with a prevailing amount of nudes. One of his most famous art pieces is "Portrait of Wally," which is an artwork he created in 1912 portraying his model and former lover Walburga "Wally" Neuzil. This artwork is famous not only for its artistic density, deep feeling and unique softness of colors created by Schiele, but also because it was the centerpiece of a complex and highly publicized legal case that went on for more than 13 years.





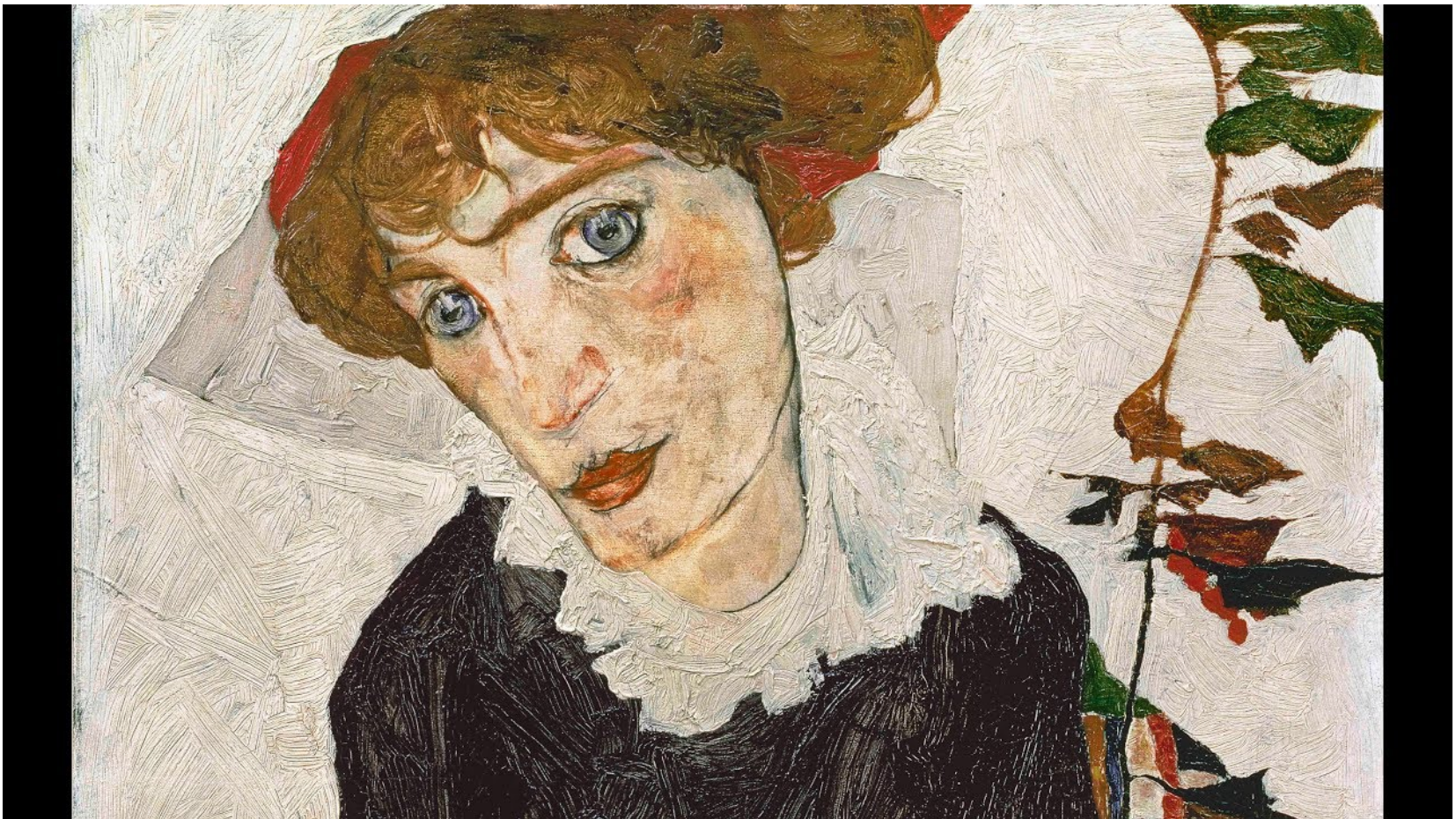
---

# PORTRAIT OF WALLY

*Egon Schiele*

The painting depicts Wally's bust. "Portrait of Wally" has a lot of different tones and colors.

There are no supplementary color contrasts and low saturation most likely because Egon Schiele tried to make the painting look very harmonious and calm. Wally was Egon Schiele's lover and former Gustav Klimt's mistress.



Egon Schiele was a major expressionist and his work represents this art movement very well. Despite the "dirtiness" and dullness of the color pattern in the painting, it has a very calm and appealing tone into it. Walburga "Wally" Neuzil was a very significant person to Egon Schiele and was romantically involved with him, therefore he portrayed her in a good perspective, showing compassion and love to her. He used dull, but soft and pretty colors to show his warm feelings towards her. Especially he paid a lot of attention to her eyes. He painted them with a very appealing, dreamy blue color and some white spots on iris to show their brightness, which is probably because he loved her eyes a lot.





All of Egon Schiele works have a very unique and specific texture. He used hard brushes and painted with large strokes, which are very obvious to the viewer. This "negligence" is a very distinct characteristic of expressionism which was partially created and established by Egon Schiele. The lines in his art are also a very significant characteristic of his work. Just as the color, they are unnatural and contradict the sizes and shapes of objects in reality. Wally in his painting has a big head, big eyes, a small chin and a quite big mouth, which is unrealistically close to the bottom of her face. The lines in his art are curved, sometimes sharp and very "quick". This makes the expression of feelings in his art even more "extreme".

**THANK YOU!**